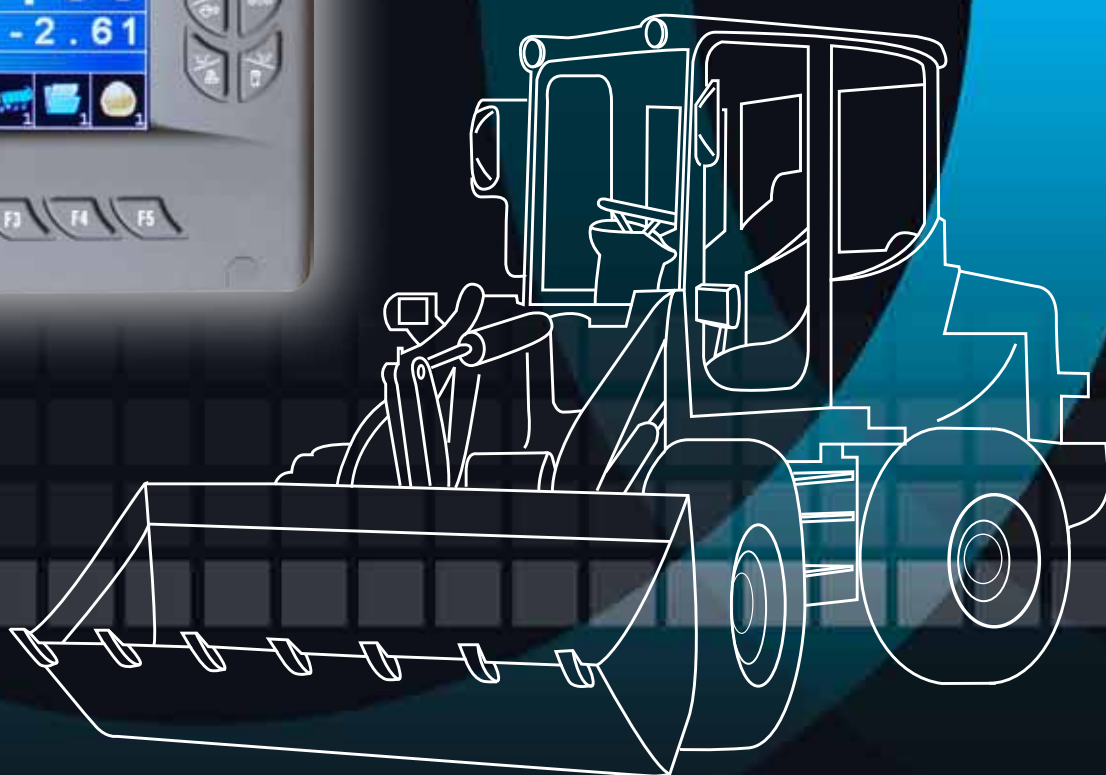




I.VIEW LINE AND SLIM LINE FOR FRONT LOADERS AND FORKLIFTS



3B6®

I.View line

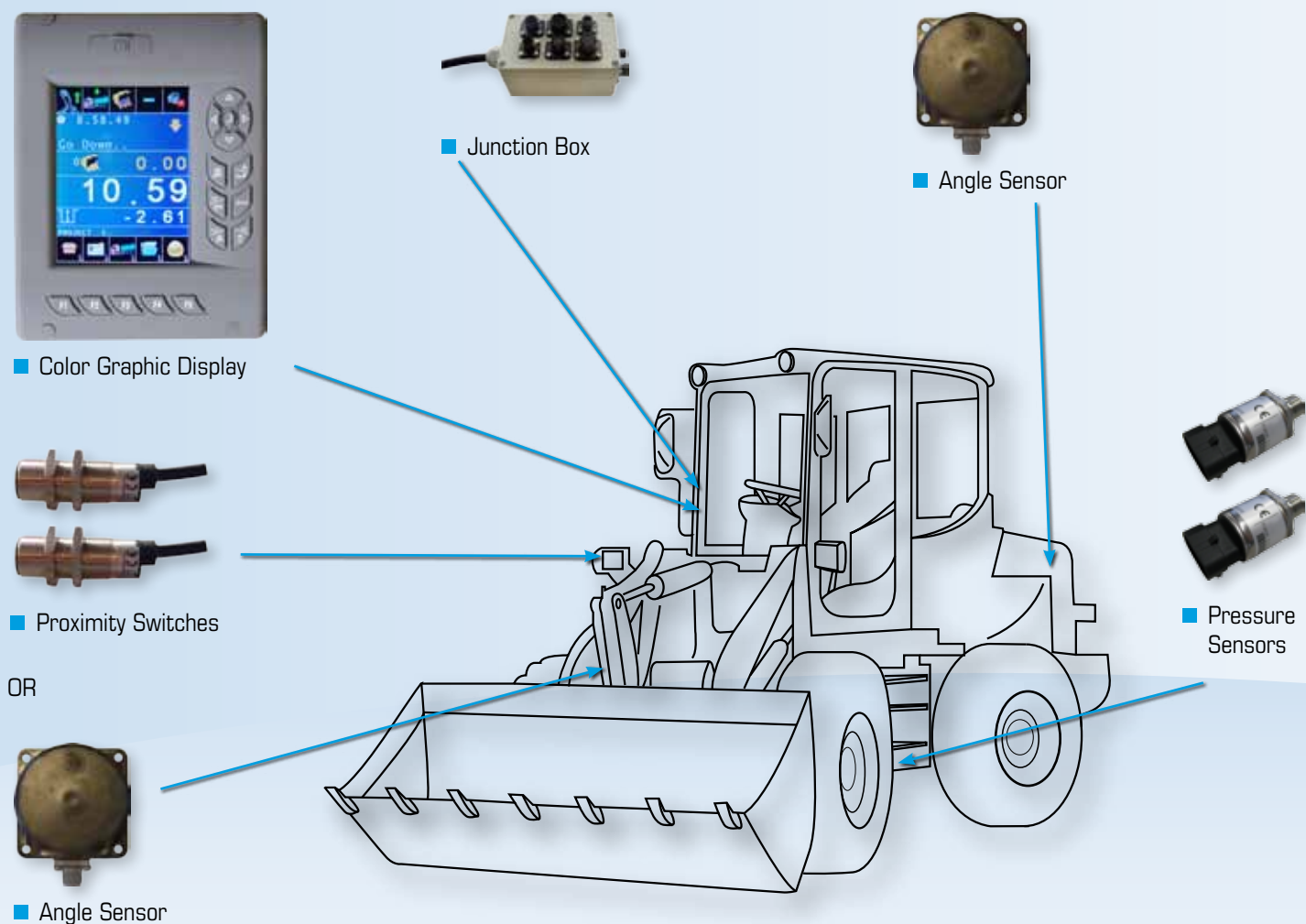


The I.View Weighing System:

- is the result of many years of experience in weighing & management systems for Front Loaders
- has a unique icon based software and color display
- is essential for quarries and mines without weighing bridges and equally ideal for sites where the weighbridge is a significant distance from the loading area.
- speeds up the loading operation by achieving the maximum filling capacity of the truck first time, reducing laps to the weigh bridge.
- increases productivity of your machine by performing a (typical) weigh accuracy of $\pm 1\%$ when loading loose materials.
- increases productivity and consequent profit from each job thanks to its revolutionary loading and management technology.
- has an industry leading self learning calibration function that drastically reduces the system implementation time
- stores and manages daily/weekly totals
- is capable of tracking different materials on the same truck



I.VIEW LINE



Technical Specifications

- the color display has the important feature to clearly show the key functions of the system. The display has built in adjustable brightness and 3 selectable alarms (1 for date & 2 for time) for operator convenience.

- is capable of managing a programmed data base of up to:
 - 500 clients
 - 500 license plates
 - 100 projects
 - 50 operators
 - 200 materials

Electrical Characteristics

Power Supply: 9 ÷ 30 Vdc (Operates on vehicle power supply directly)

Mechanical Characteristics And Ratings

- Housing: ABS with co-molding technology
- Protection: IP65
- Operative Temperature Range:
-30°C / +80°C [-22°F / 176°F]
- Storage Temperature Range:
-30°C / +85°C [-22°F / 185°F]

Additional Features

- SD card
- Backup and Management of Loading and Customers Data

Slim line



The Slim line system:

- is a basic weighing system for Forklifts & Front Loaders to monitor the weights of loads being lifted.
- is ideal for Forklifts and Front Loaders applications.
- is available in both dynamic and static versions, accordingly to the client's needs.
- may be connected to a printer (Optional).
- utilises the same self learning calibration function that the I.View does also reducing the system implementation time
- is a very accurate weighing tool for monitoring the load being lifted.

Readings

- Partial Weight
- Total Weight
- Machine selection [forklift/ frontloader]

Options

- Printer
- Display available in In-Dash configuration

Technical Specifications

- Pre-cabled wiring for easy installation
- LCD display with adjustable contrast
- Smart Software for self-learning calibration
- Protection degree: IP65
- Power Supply: 10-30 VDC
- Operating Temperature: -20°C +70°C / -4°F +158°F
- Connection: Cable Harness with Automotive connectors
- On Dash easy mounting with swivel support
- Hi Tech design to best fit any machine
- Low Profile display for best installation
- Clear indication of the readings on the display



SLIM LINE



■ LCD Graphic Display



■ Printer

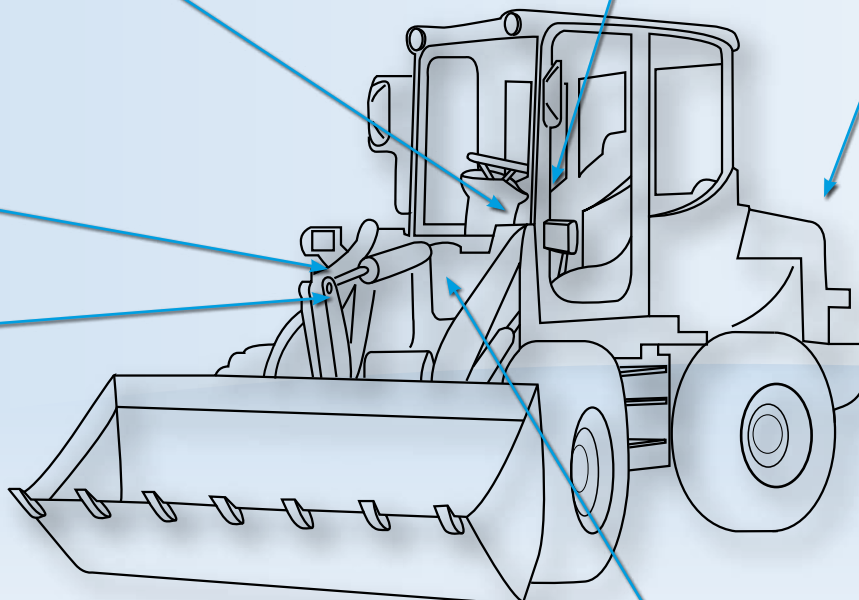
■ ASC Sensor



■ Proximity Switches

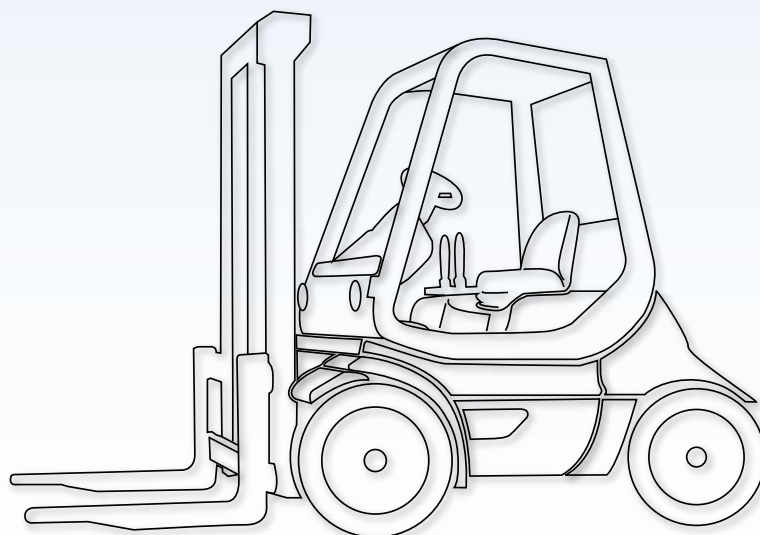
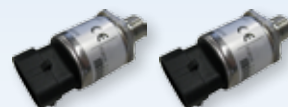
OR

■ ASC Sensor



■ Pressure Sensors

■ 2nd Pressure Sensor (Optional)





■ I.View
Data Management
Software



■ Memory Card

■ Ticket
Printer

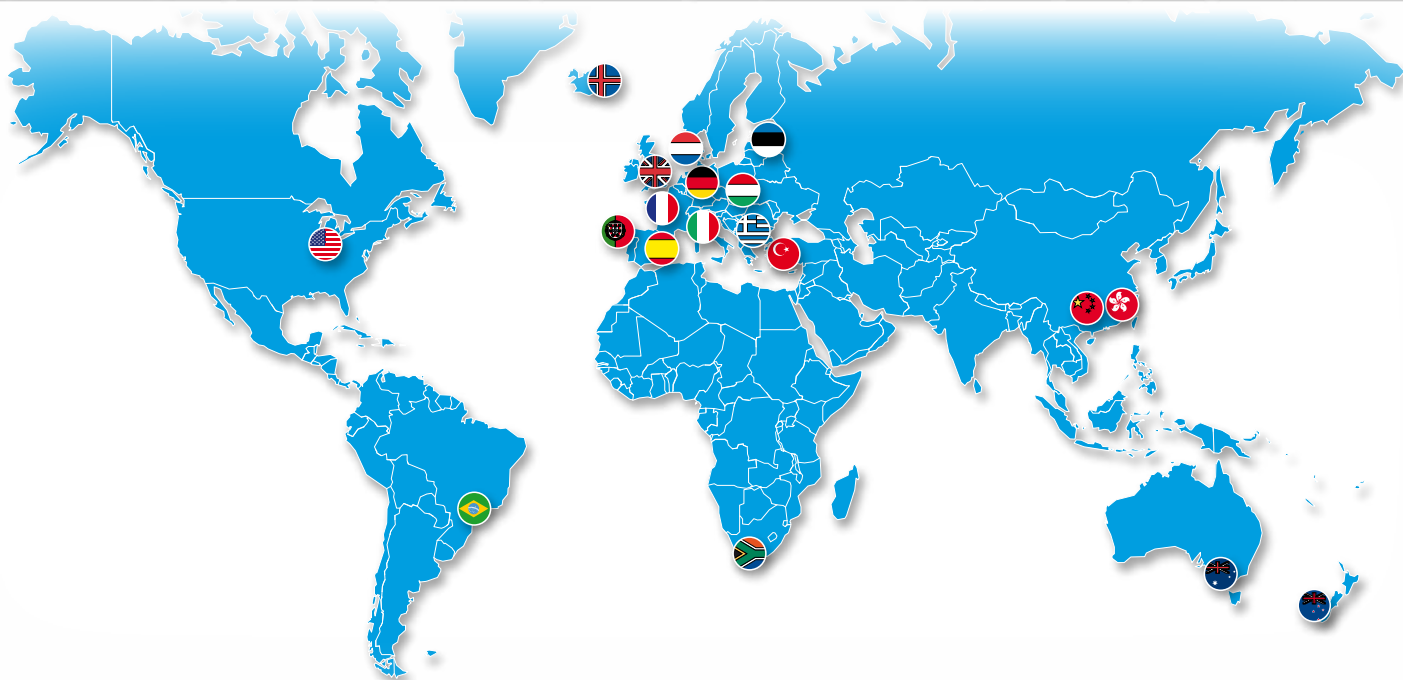


■ Roll
Printer





WORLDWIDE SALES NETWORK



U.S.A.



Brazil



Iceland



Portugal



Spain



France



United Kingdom



Italy



South Africa



Germany



The Netherlands



Greece



Hungary



Turkey



Estonia



China



Hong Kong



Australia



New Zealand



Headquarters:

Via Tito Speri, 10

25024 Leno (Brescia) ITALY

Tel. +39 030 90451

Fax +39 030 9045330

info@cobospa.it

www.cobospa.it



C.O.B.O. S.p.A. - Divisione 3B6

Via Sivo, 74

28053 Castelletto Sopra Ticino (Novara) ITALY

Phone +39 0331 9286.1

Fax +39 0331 972160

3b6@3b6.it

www.3b6.it